



Supported by
PREVENT BLINDNESS FOUNDATION

**Queensland Eye Institute &
Prevent Blindness Foundation**

Dr Brendan Cronin

www.drbrendancronin.com.au

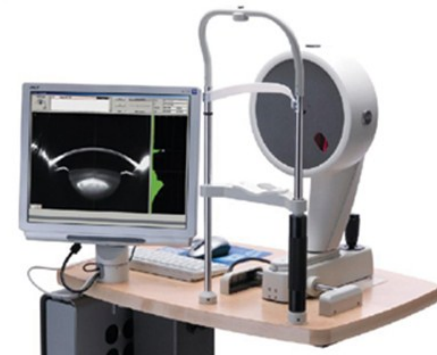
Queensland Eye Institute
140 Melbourne Street
South Brisbane QLD 4101

Phone: 07 3239 5000

Fax: 07 3844 2246



Corneal Topography & Pentacam



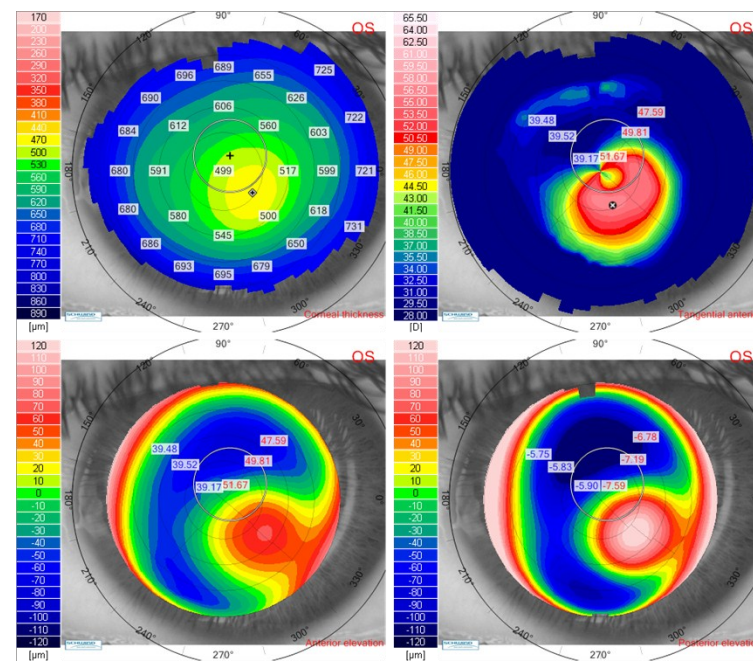
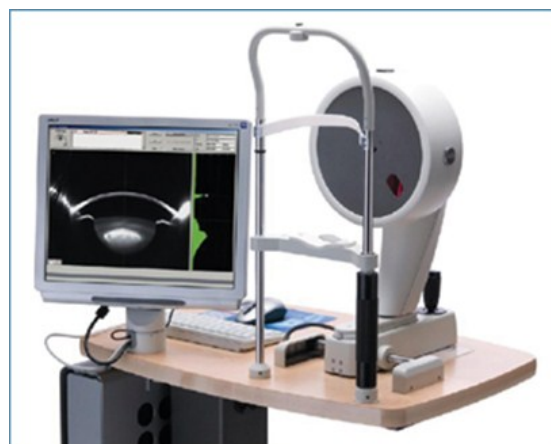


CORNEAL TOPOGRAPHY / PENTACAM

This is a specialised piece of equipment for accurately mapping the shape of the cornea in diseases such as keratoconus and in corneal transplants. The pentacam uses two high speed rotating cameras to enable analysis of the precise shape of the front and back surfaces of the cornea. These measurements are used in the diagnosis and treatment of corneal pathology as well as to assist in choosing the correct intraocular lens in patients having cataract surgery after laser refractive surgery.

Topography allows diagnosis of corneal diseases well before they can be diagnosed clinically. For some conditions, this means that treatment can be started for a disease before it begins to cause any reduction in vision.

Unfortunately Medicare does not offer a rebate for Corneal Topography.



Typical corneal topography of keratoconus

Accurate and repeatable topography is vital to monitoring corneal diseases. When you are having your scan performed, open your eyes as wide as possible and try not to blink.